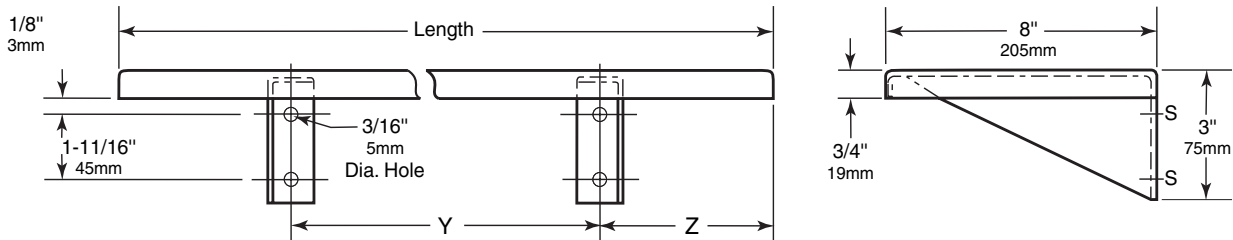
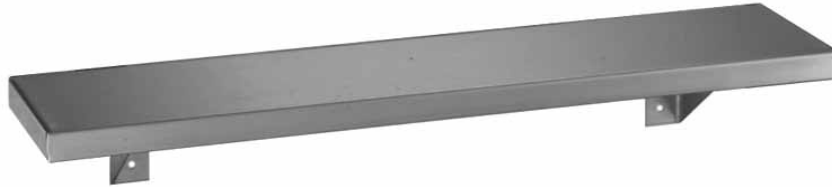




Technical Data

STAINLESS STEEL SHELF

B-298



STANDARD STOCK SIZES

Model No.	Length	No. Of Brackets	Dimension Y	Dimension Z
B-298x16	16" (405mm)	2	12" (305mm)	2" (50mm)
B-298x18	18" (455mm)	2	12" (305mm)	3" (75mm)
B-298x24	24" (610mm)	2	18" (455mm)	3" (75mm)
B-298x36	36" (915mm)	3	16" (405mm)	2" (50mm)

Custom sizes available up to maximum length of 28 feet (853cm). Shelves longer than 8 feet (244cm) are furnished in multiple sections.

MATERIALS:

Shelf — 18-8 S, type-304, 18-gauge (1.2mm) stainless steel with satin finish. 3/4" (19mm) return edges for maximum rigidity. Front edge is hemmed for safe handling.

Mounting Brackets — 18-8 S, type-304, 16-gauge (1.6mm) stainless steel with satin finish. Welded to back return of shelf and secured inside front hem of shelf.

INSTALLATION:

Secure shelf to wall with sheet-metal screws (not furnished) at points indicated by an S. For plaster or dry wall construction, provide concealed backing to comply with local building codes, then secure shelf with sheet-metal screws. For other wall surfaces, provide fiber plugs or expansion shields for use with sheet-metal screws, or provide 1/8" (3mm) toggle bolts or expansion bolts.

SPECIFICATION:

Shelf shall be type-304, 18-gauge (1.2mm) stainless steel with satin finish. Mounting brackets, welded to shelf, shall be 16-gauge (1.6mm) stainless steel. Shelf shall be _____ (insert length) long by 8" (205mm) wide with 3/4" (19mm) return edges. Front edge shall be hemmed for safe handling. Manufacturer's service and parts manual shall be provided to the building owner/manager upon completion of project.

Stainless Steel Shelf shall be Model _____ (insert model number) of Bobrick Washroom Equipment, Inc., Clifton Park, New York; Jackson, Tennessee; Los Angeles, California; Bobrick Washroom Equipment Company, Scarborough, Ontario; Bobrick Washroom Equipment Pty. Ltd., Australia; and Bobrick Washroom Equipment Limited, United Kingdom.