



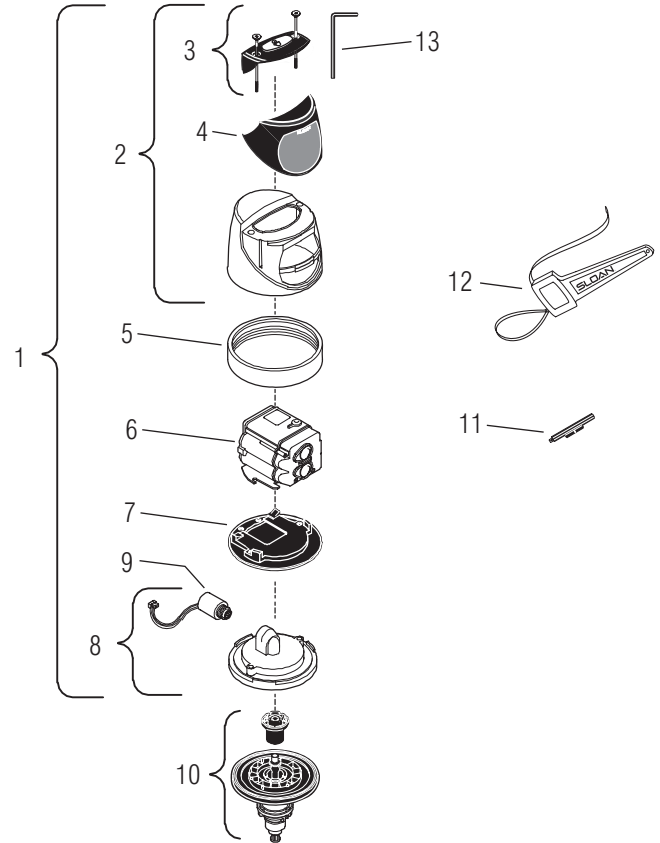
SENSOR OPERATED FLUSHOMETERS

SENSOR MODULE COMPONENT PARTS

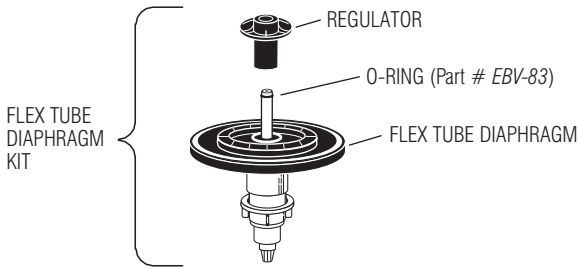
Item No.	Code No.	Part No.	Description
1.	0325160	EBV-138-A	G2 Cover/Ring/Sensor Assembly — Water Closet
	0325161	EBV-139-A	G2 Cover/Ring/Sensor Assembly — Urinal
	0325166	EBV-149-A	G2 Cover/Ring/Sensor Assembly — Water Closet w/ Zurn Ring
	0325167	EBV-150-A	G2 Cover/Ring/Sensor Assembly — Urinal w/ Zurn Ring
2.	0325168	EBV-142-A	Cover Assembly
3.	0325172	EBV-130-A	Override Button Assembly (includes screws & hex wrench)
	0325170	EBV-132-A	Screws (2) and Hex Wrench Only
4.	0325169	EBV-131	Lens Window Cover
5.	0325804	EBV-14	Locking Ring
	3325524	EBV-31-A	Locking Ring — for Zurn Valves
6.	3325450	EBV-129-A-C	G2 Electronic Module — Water Closet
	3325451	EBV-129-A-U	G2 Electronic Module — Urinal
7.	0325171	EBV-134	Cover Rest Plate
8.	3325456	EBV-145-A	G2 Inside Cover Assembly (includes solenoid)
9.	3325453	EBV-136-A	Solenoid (For G2 Modules only)
10.	SEE CHART		Flex Tube Diaphragm Kit

Accessories

11.	0325107	EBV-91	Trimpot Adjustment Screwdriver
12.	0325823	EBV-22	Strap Wrench
13.	0325159	EBV-137	7/64" Hex Wrench



FLEX TUBE DIAPHRAGM INSIDE PARTS KITS



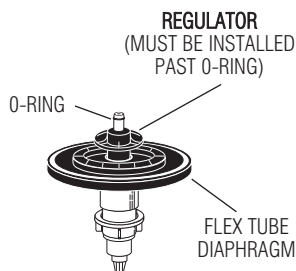
5325056 EBV-83 O-ring — 6 per package

FLEX TUBE DIAPHRAGM KIT †		APPLICATION	REGULATOR COLOR ◆
EBV-1023-A	3325003	URINAL-0.5 gpf/1.9 Lpf	GREEN
EBV-1022-A	3325000	URINAL-1.0 gpf/3.8 Lpf ‡	GREEN
EBV-1022-A	3325000	URINAL-1.5 gpf/5.7 Lpf	BLACK
EBV-1020-A	3325001	URINAL-3.5 gpf/13.2 Lpf	WHITE
EBV-1020-A	3325001	CLOSET-1.6 gpf/6.0 Lpf	GREEN
EBV-1021-A	3325014	CLOSET-2.4 gpf/9.0 Lpf	BLUE
EBV-1020-A	3325001	CLOSET-3.5 gpf/13.2 Lpf	WHITE
EBV-1020-A	3325001	CLOSET-4.5 gpf/17.0 Lpf §	WHITE

† The EBV-1020-A and EBV-1022-A Kits are supplied with multiple Regulators.
 ‡ A 0.5 gpf (1.9 Lpf) Urinal kit can be converted to a 1.0 gpf (3.8 Lpf) by cutting and removing the smooth A-164 Flow Ring from the Guide.
 § For a 4.5 gpf (17 Lpf) Water Closet flush use the EBV-1020-A Kit with the White Regulator, and cut and remove the A-164 Flow Ring from the Guide.
 ◆ Color of Regulator to be used with Flex Tube Diaphragm to obtain the listed flush volume.

REGULATORS

The flush volume of the Flex Tube Diaphragm Kit is control by the Regulator. Regulators are identified by color. Some Flex Tube Diaphragm Kits are supplied with multiple Regulators. The installer must make sure the proper Regulator is used when installing the Flex Tube Diaphragm Kit.



REGULATOR (Sold 6 per package)

FLUSH VOLUME AND FIXTURE	REGULATOR COLOR	PART NO.	CODE NO
URINAL-0.5 gpf/1.9 Lpf	GREEN	EBV-95	5325122
URINAL-1.0 gpf/3.8 Lpf	GREEN	EBV-95	5325122
URINAL-1.5 gpf/5.7 Lpf	BLACK	EBV-102-2	5325129
URINAL-3.5 gpf/13.2 Lpf	WHITE	EBV-102-1	5325130
CLOSET-1.6 gpf/6.0 Lpf	GREEN	EBV-95	5325122
CLOSET-3.5 gpf/13.2 Lpf	WHITE	EBV-102-1	5325130
CLOSET-2.4 gpf/9.0 Lpf	BLUE	EBV-101	5325128

The EBV-1020-A and EBV-1022-A Kits are supplied with multiple Flush Volume Regulators. The Installer must use the correct Regulator when installing the kit.