

SYMMONS® Symmetrix®

Kitchen Faucet S-26 Series

INSTALLATION, OPERATION AND SERVICE INSTRUCTIONS

Faucet meets ANSI A112.18.1M Flow rate: 2.2 gpm (8.3 L/min)

Caution: Be sure to turn off hot and cold water supplies before installing or servicing faucet.

INSTALLATION:

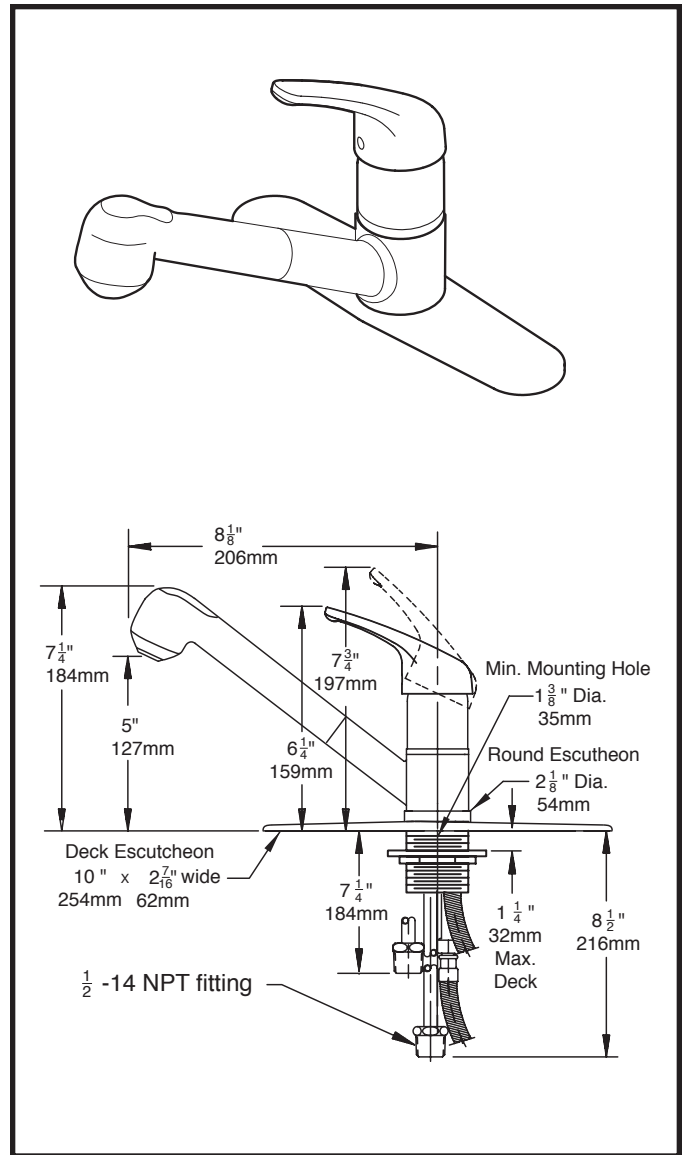
This faucet will install through a standard 1-3/8" diameter mounting hole in a sink.

For the installation of your faucet, you will need these basic tools: Adjustable wrench, channel pliers, and Phillips screwdriver.

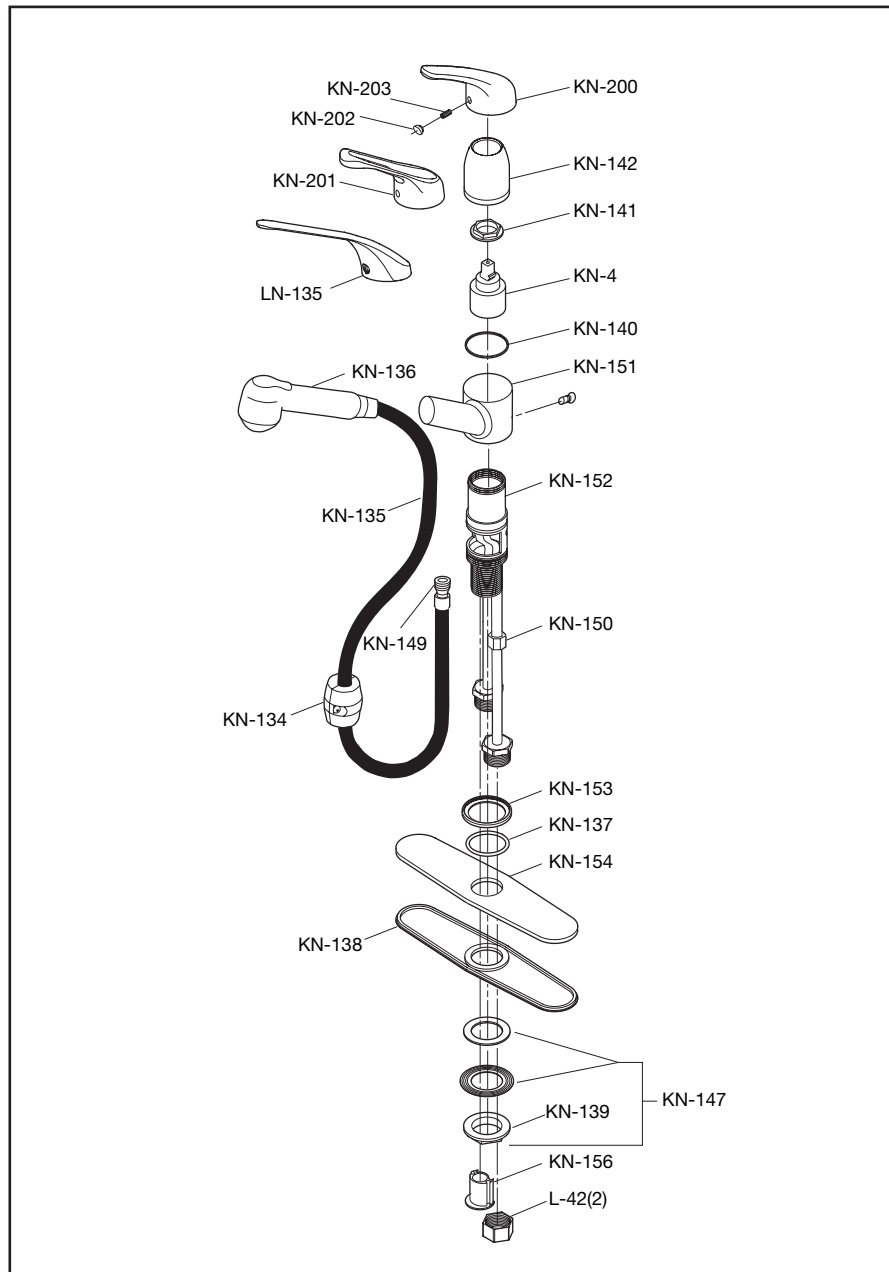
1. For mounting faucet on sink ledge with three holes, position rubber gasket (KN-138) over center sink hole. Place escutcheon (KN-154) over center spacer. (For single hole/center mount, discard rubber gasket, and cover plate).
2. With escutcheon (KN-154) in position over three holes make certain O-ring is placed in recess on underside of base ring. (For single hole/center mount, escutcheon is not used).
3. From underside of sink, slip on rubber washer (KN-147), stainless steel washer (KN-148), thread on mounting nut (KN-139) and tighten. Make certain that faucet body is centered so that handle and spout rotate equally to both left and right.
4. Attach male threaded end of spray hose (KN-135) and small rubber washer (KN-149) to tube with attached coupling nut (KN-150). Tighten with wrenches on both the coupling nut and the end of the spray hose. Take care not to twist the copper tube.
5. Attach weight to hose on spout side of loop, just above bend. Use screws provided.
6. Connect Hot (red) and Cold (blue) water supplies to faucet copper tubes with compression fittings or other acceptable connections. Turn on water supplies and check for leaks.
7. It is very important to thoroughly flush the supply lines to prevent foreign matter, i.e. copper chips, sand, stones, etc. from damaging the sealing surfaces of cartridge. Use channel pliers to remove aerator from spray head taking care not to mar finish, turn on water supplies, flush lines for one minute. Replace aerator.

To replace cartridge (KN-4):

1. Remove plug button (KN-202), loosen set screw (KN-203) and remove handle (KN-200 or KN-201).
2. Unthread valve cap (KN-142) from valve body.
3. Remove cartridge and three ring seal (KN-4).
4. Install new cartridge while taking care to maintain position of the three ring seal at the base of the cartridge. Match posts in base of cartridge with alignment holes in adapter plate during assembly.
5. Reassemble faucet in reverse fashion. Thread cap onto body firmly by hand. Do not use a wrench which may damage the finish.



- KN-4 Cartridge
- KN-134 Balance weight
- KN-135 Pull-out hose
- KN-136 Hand spray
- KN-137 Deck gasket (single hole)
- KN-138 Deck gasket (standard)
- KN-139 Mounting nut
- KN-140 O-ring
- KN-141 Cartridge lock nut
- KN-142 Valve cap
- KN-147 Stainless steel and rubber washers (w/KN-139)
- KN-149 Rubber washer
- KN-150 Coupling nut
- KN-151 Housing
- KN-152 Body assembly
- KN-153 Deck ring
- KN-154 Escutcheon
- KN-156 Hose guide
- KN-200 Solid handle
- KN-201 Loop handle
- KN-202 Plug button
- KN-203 Set screw
- LN-135 6" lever handle with red/blue indicators
- L-42 Nut (2)



Lifetime Limited Warranty

Symmons warrants to the original consumer purchaser that any TEMPTROL® series* or SYMMETRIX® product will be free of defects in material and workmanship during normal domestic use for the life of your home. All other products and purchasers including industrial, commercial or business use are warranted for a period of 5 years from the date of purchase. At our option, we will either have you send the defective part or product prepaid to us for inspection, or we may elect to send you the replacement part or product without investigation. A replacement for any defective part will be supplied FREE OF CHARGE for installation by the purchaser. Defect or damage caused by the use of replacement parts other than Symmons Genuine Replacement Parts will void this warranty. This warranty excludes product damage due to installation error, product abuse, or product misuse whether performed by a contractor, service company or yourself.

Symmons further warrants that any TEMPTROL or SYMMETRIX product will be leak free and drip free during normal domestic use for the life of your home. If the product should develop a leak or drip, Symmons will provide FREE OF CHARGE the parts necessary to return it to good working condition.

Proof of purchase (original sales receipt) and a copy of the warranty registration card from the original consumer purchaser must accompany all warranty claims. This warranty is applicable only to Symmons TEMPTROL or SYMMETRIX products purchased after July 1, 1998 and shall be effective from the date of purchase as shown on the purchaser's receipt.

Damage to the chrome and/or other decorative finishes on Symmons products may be a result of improper handling or abusive treatment. Finishes should only be cleaned with a soft, damp cloth or sponge. Use of polish, abrasive cleaners, solvents, or acid cleaners will damage the finish and void this warranty.

There are no other express warranties on this product and ALL WARRANTIES OF MERCHANTABILITY AND OTHER IMPLIED WARRANTIES ARE LIMITED IN ACCORDANCE WITH APPLICABLE LAW. SYMMONS INDUSTRIES, INC., EXPRESSLY DISCLAIMS CONTINGENT LIABILITY AND CONSEQUENTIAL DAMAGE OF EVERY KIND. Since some states do not allow limitations on how long an implied warranty lasts or an exclusion or limitation of incidental or consequential damages the above limitation or exclusion may not be applicable. This warranty gives specific legal rights. Other rights may vary from state to state.

To obtain warranty service, write to Symmons Industries, Inc., 31 Brooks Drive, Braintree, MA 02184-3804 or call our Customer Service Department at 1-800-SYMMONS. If writing to us, please include proof of purchase, the model number of the product with a brief description of the problem, your name, address and phone number.

Temptrol series includes Allura®, Olide Braintree Brass®, Temptrol, Temptrol Deluxe and Temptrol II shower and tub/shower systems. Symmons warrants to the original consumer purchaser that any TEMPTROL® series or SYMMETRIX® product will be free of defects in material and

workmanship during normal domestic use for the life of your home. All other products and purchasers including industrial, commercial or business use are warranted for a period of 5 years from the date of purchase. At our option, we will either have you send the defective part or product prepaid to us for inspection, or we may elect to send you the replacement part or product without investigation. A replacement for any defective part will be supplied FREE OF CHARGE for installation by the purchaser. Defect or damage caused by the use of replacement parts other than Symmons Genuine Replacement Parts will void this warranty. This warranty excludes product damage due to installation error, product abuse, or product misuse whether performed by a contractor, service company or yourself.

Symmons further warrants that any TEMPTROL or SYMMETRIX product will be leak free and drip free during normal domestic use for the life of your home. If the product should develop a leak or drip, Symmons will provide FREE OF CHARGE the parts necessary to return it to good working condition.

Proof of purchase (original sales receipt) and a copy of the warranty registration card from the original consumer purchaser must accompany all warranty claims. This warranty is applicable only to Symmons TEMPTROL or SYMMETRIX products purchased after July 1, 1998 and shall be effective from the date of purchase as shown on the purchaser's receipt.

Damage to the chrome and/or other decorative finishes on Symmons products may be a result of improper handling or abusive treatment. Finishes should only be cleaned with a soft, damp cloth or sponge. Use of polish, abrasive cleaners, solvents, or acid cleaners will damage the finish and void this warranty.

There are no other express warranties on this product and ALL WARRANTIES OF MERCHANTABILITY AND OTHER IMPLIED WARRANTIES ARE LIMITED IN ACCORDANCE WITH APPLICABLE LAW. SYMMONS INDUSTRIES, INC., EXPRESSLY DISCLAIMS CONTINGENT LIABILITY AND CONSEQUENTIAL DAMAGE OF EVERY KIND. Since some states do not allow limitations on how long an implied warranty lasts or an exclusion or limitation of incidental or consequential damages the above limitation or exclusion may not be applicable. This warranty gives specific legal rights. Other rights may vary from state to state.

To obtain warranty service, write to Symmons Industries, Inc., 31 Brooks Drive, Braintree, MA 02184-3804 or call our Customer Service Department at 1-800-SYMMONS. If writing to us, please include proof of purchase, the model number of the product with a brief description of the problem, your name, address and phone number.

*Temptrol series includes Allura®, Olide Braintree Brass®, Temptrol, Temptrol Deluxe and Temptrol II shower and tub/shower systems.

Symmons Industries, Inc. ■ 31 Brooks Drive ■ Braintree, MA 02184
 (800) 796-6667, (781) 848-2250 ■ Fax (800) 961-9621, (781) 843-3849
 Website: www.symmons.com ■ Email: customerservice@symmons.com

©2007, 2008 Symmons Industries, Inc. Printed in U.S.A. ■ ZV-370 ■ 050508

